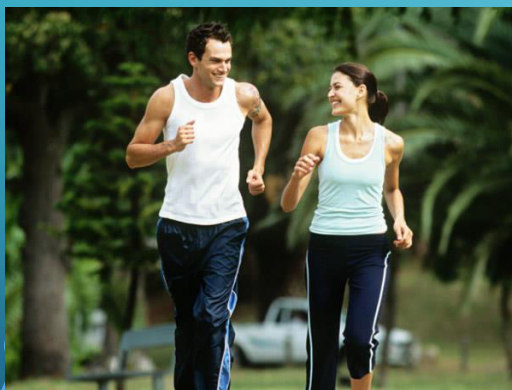




# YEAR OF MIRACLES RESPIRATORY SYSTEM BLADDER, KIDNEYS

CELL  
REGENERATION  
TRAINING

[JULIERENEE.COM](http://JULIERENEE.COM)



# PRAYER



# Opening Blessing Removal of Obstacles



Vakratunda maha kaya  
Kyoti surya samapraba  
Ner vig nam kuramay devo  
Sarvakyaesho sarvahda

Guru Brahmha Guru Vishnu  
Guru Devo Mahe swaraha  
Guru Sakshat parad bramha  
Tasma shree Guruve namaha

Om Gum Ganapatiya namaha  
Dum Durgaiya namaha  
Om eim Saraswatiya swaha

Om shanti shanti shantihi



*I am free to live a life of spiritual freedom and full self expression liberated in love, gratitude and mastery in this body here and now.*

*My spirit is limitless.*

*I am responsible for any limits I experience in this body and have complete access to the divine through prayer and contemplation to release myself from any human bonds I have worn as spiritual clothing that no longer resonate with my essence.*

LOVE WISDOM  
AFFIRMATION

Illumination



# HAND MOVEMENTS TO ACCESS THE QUANTUM FIELD AND MUSCLE TESTING

- Quantum pump
- Double pump
- Platter
- Doorknob



## • **RESPIRATION & BLADDER**

- Lungs, Bladder, Kidney, tune up ~ regeneration. Both of these areas are highly influenced by emotion – Lungs (having the right to exist) and Bladder (the reflection of ease or anger, i.e. pissed off). We clear these important areas of all degrading programs and then regenerate the entire respiratory system and bladder and kidneys in a day of growing healthier and improving body function with some very key players in your human system.

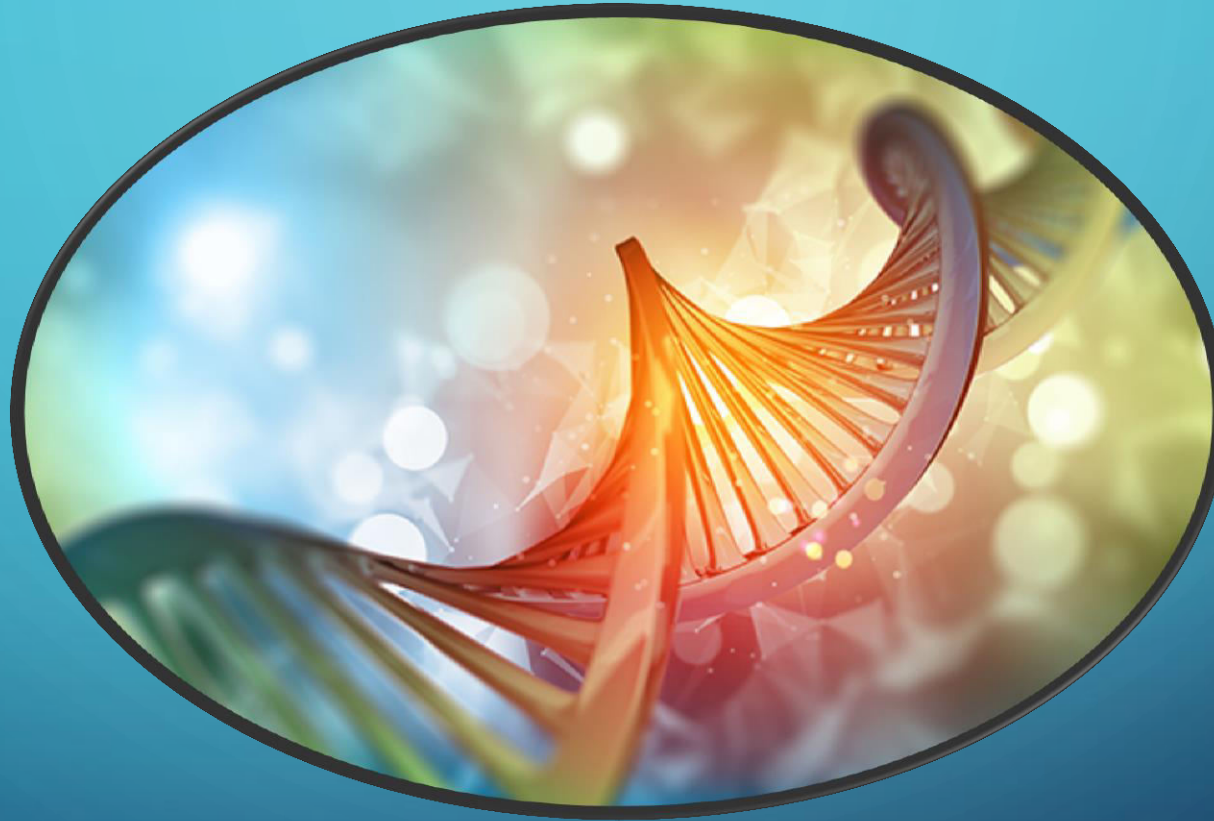


# CLEARING CHART



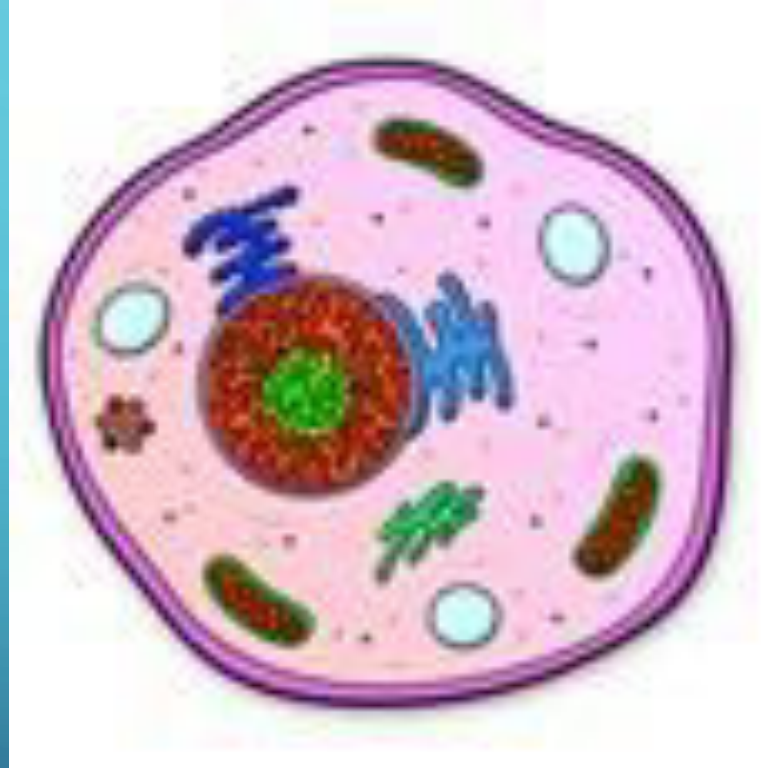
CELLULAR NEO GENESIS REGENERATION

CHART



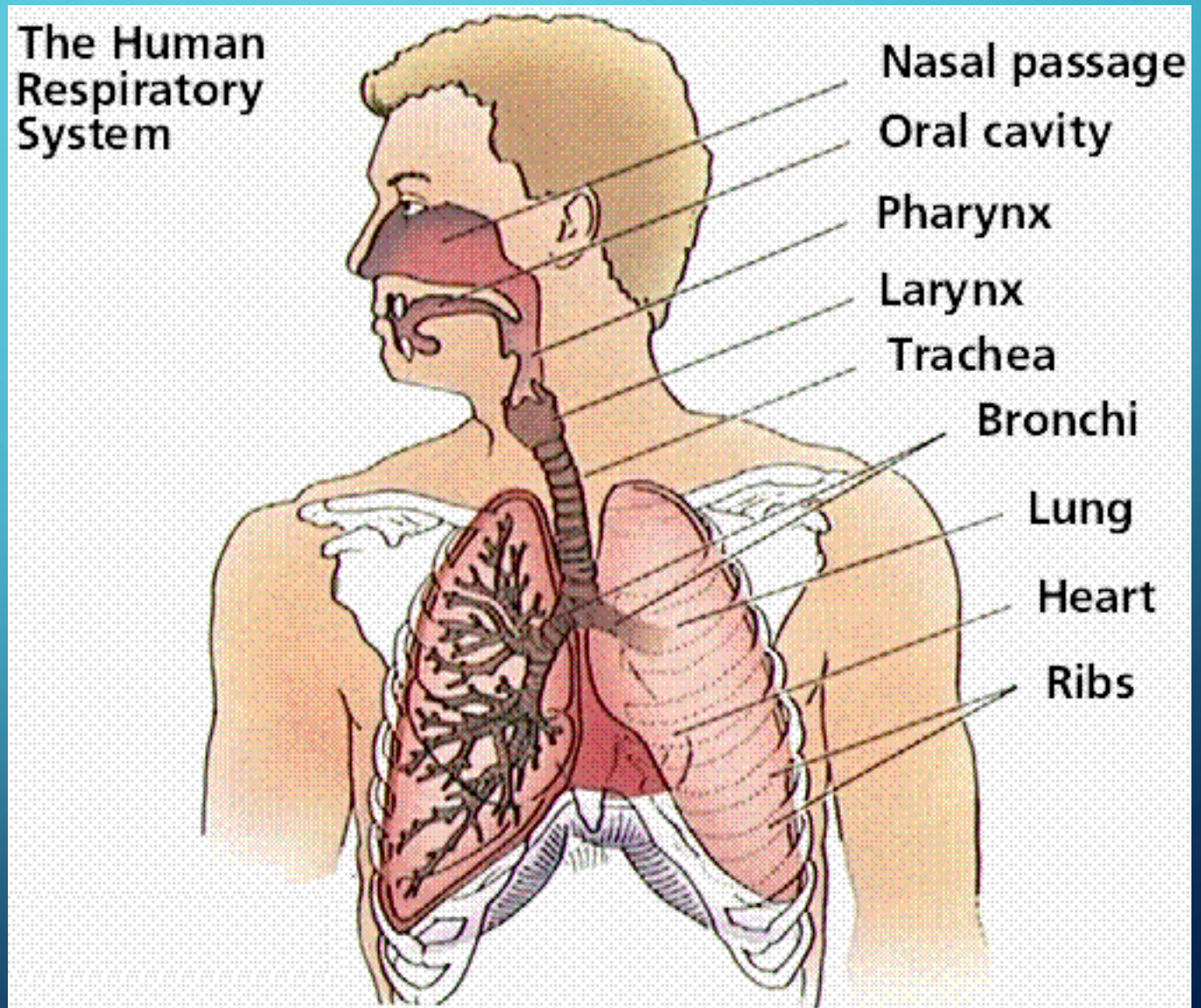


# CELL REGENERATION



Breathing well Quantum Activations for  
lungs  
master cells  
stem cells

Nasal passage day  
Oral cavity days  
Pharynx days  
Trachea day  
Bronchi days  
Lungs days





**Network of  
microtubules**

**Microfilaments**

**Chromosomes (DNA)**

**Cilia oars**

**Microvilli**

**Digestive  
vacuole**

**Pinocytosis  
vesicles**

**Chloroplasts  
(plants)**

**Cell membrane**

**Nucleus**

**Nucleoli**

**Residual  
body**

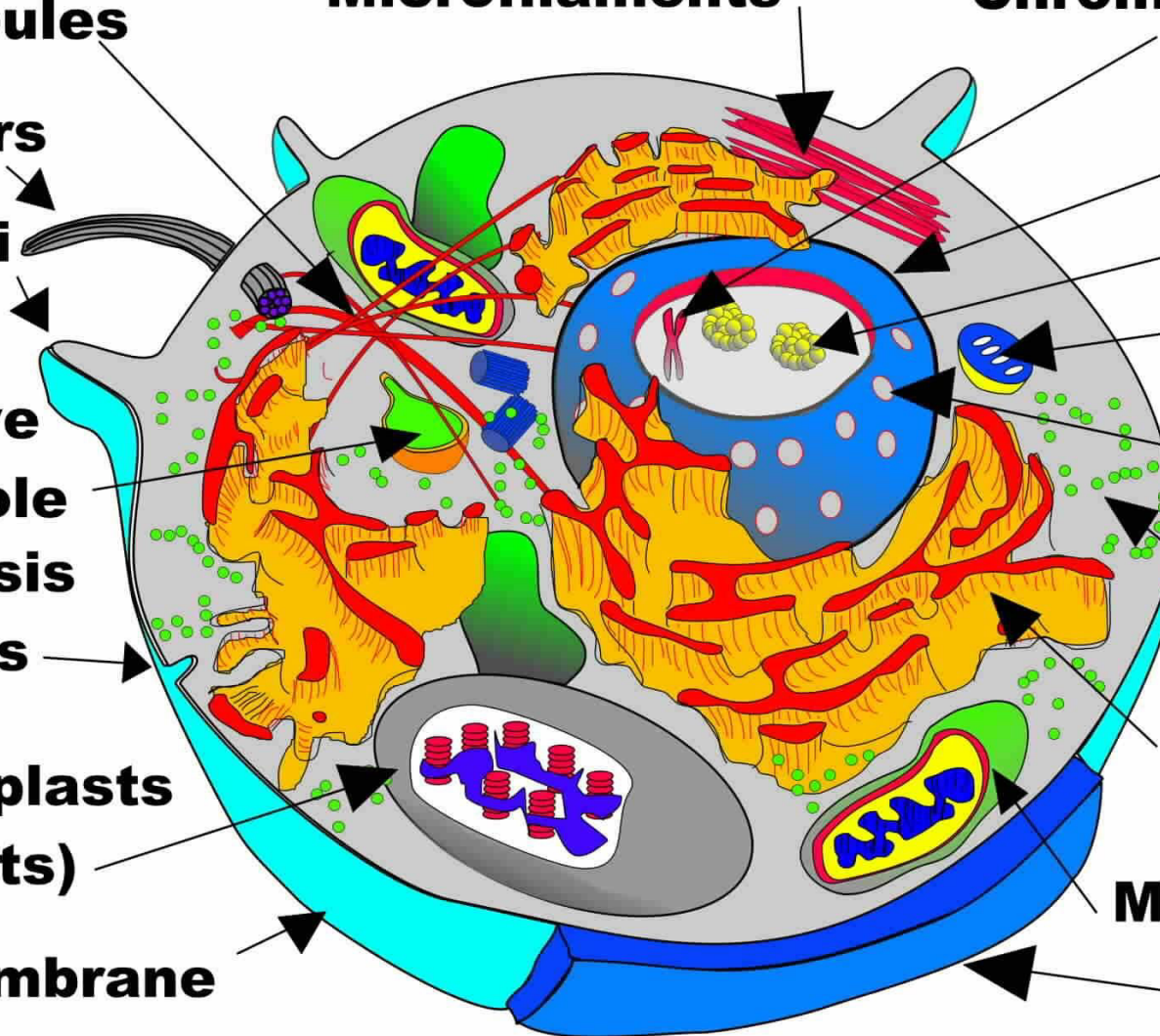
**Transfer  
pores**

**Ribosomes**

**Endoplasmic  
reticulum**

**Mitochondria**

**Cell wall**



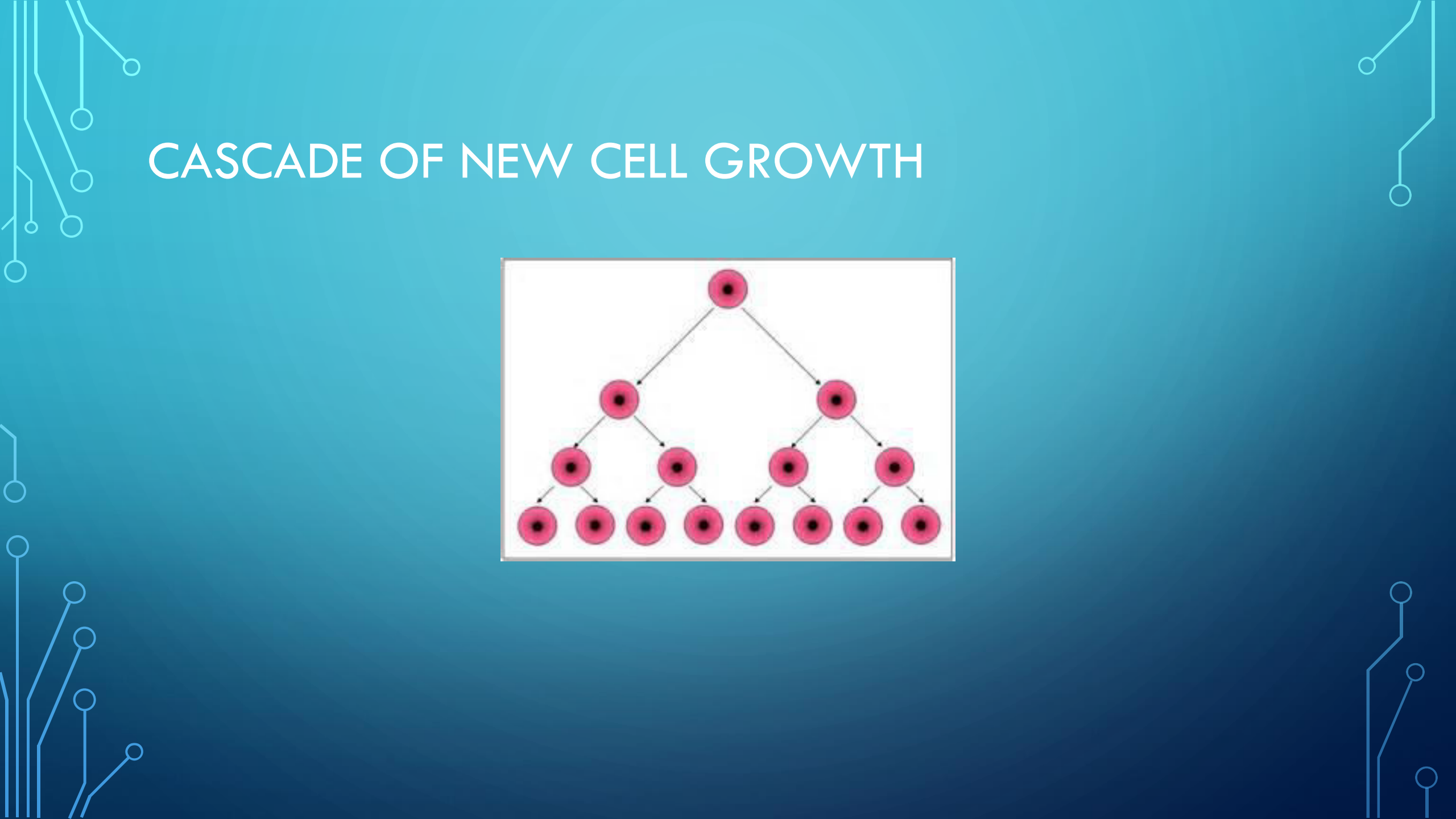
# MIRRORING TO SURROUNDING CELLS





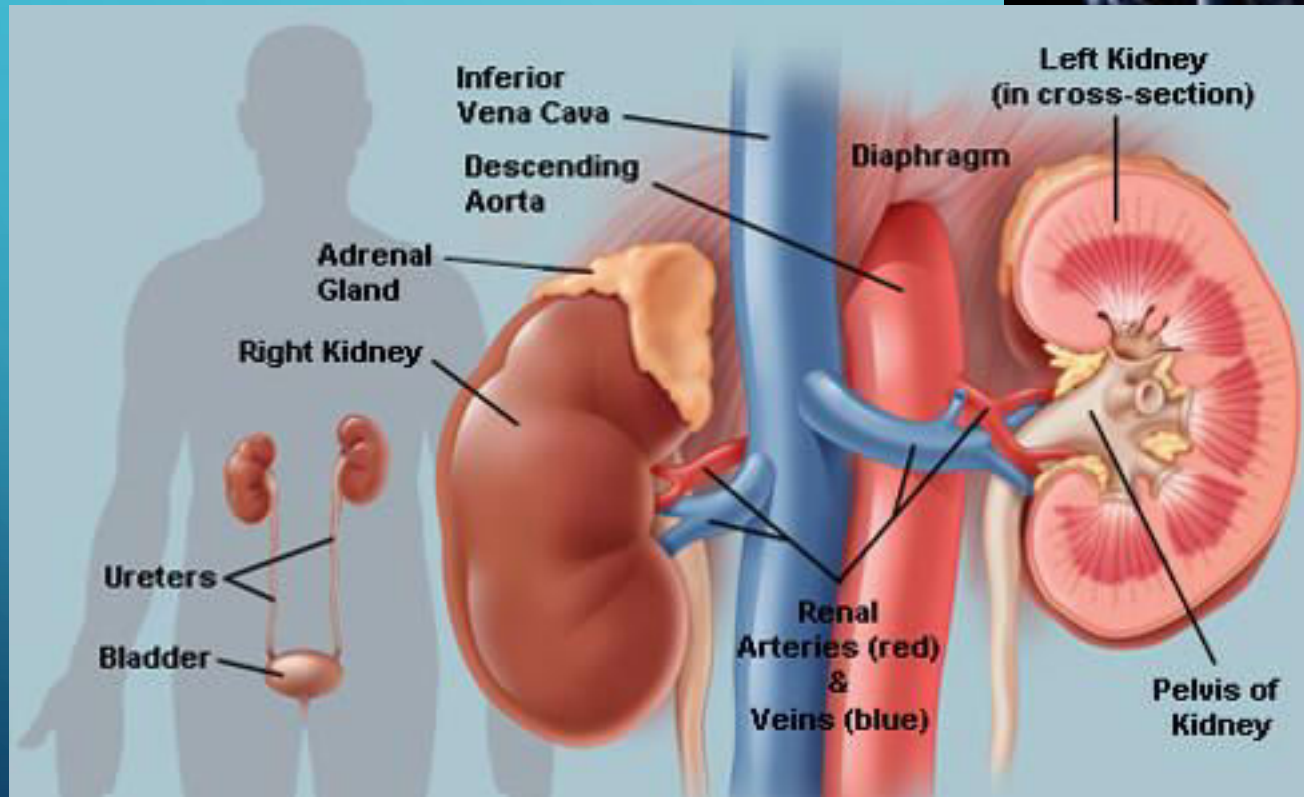
# CASCADE OF NEW CELL GROWTH

The diagram shows a single cell at the top, which divides into two cells in the second generation. Each of these two cells divides into two more cells in the third generation, resulting in four cells. Finally, each of the four cells divides into two cells in the fourth generation, resulting in a total of eight cells. The cells are represented as pink circles with black dots in the center, and arrows indicate the direction of division from parent to daughter cells.



# BLADDER AND KIDNEY

masters cells  
stem cells



Bladder

Kidneys

Urethra

Ureters

Please join us!

## NEXT STEPS

**Quantum Activations Apprentice**  
*With opportunities for Year 2 and 3  
Advancement*

*VIP One to One Miraculous Program*

*Growing Together New community  
program*

