

Brilliant Brain

JulieRenee.com



Prayer

I am free to live a life of spiritual freedom and full self expression liberated in love, gratitude and mastery in this body here and now.

My spirit is limitless.

I am responsible for any limits I experience in this body and have complete access to the divine through prayer and contemplation to release myself from any human bonds I have worn as spiritual clothing that no longer resonate with my essence.



Love wisdom affirmation

Illumination

Opening Blessing Removal of Obstacles



Vakratunda maha kaya
Kyoti surya samaprabha
Ner vig nam kuramay devo
Sarvakyaesha sarvabha

Guru Brahma Guru Vishnu
Guru Devo Mahe swaraha
Guru Sakshat parad brahma
Tasma shree Guruve namaha

Om Gum Ganapatiya namaha
Dum Durgaiya namaha
Om eim Saraswatiya swaha

Om shanti shanti shantihi

Chart for pumping style



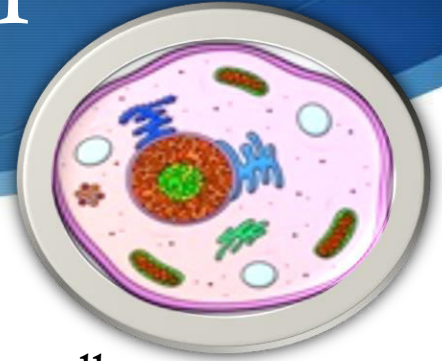
Clearing Chart



Brain Regeneration Cellular neo genesis Chart



Cell Regeneration



Cellular Neo Genesis

Revitalization of existing stem cells and the genesis of new stem cells. This technique uses the master cell, the original stem cell for the area being regenerated. This cell holds a great deal of information about how to grow new cells. Using the quantum field and a hand movement called the 'quantum pump' the stem cell is brought to 100%. Cell regeneration is brought about by activating the perfected master cell in the human blueprint: then moving this cell into physical reality. For example one might imagine it as the perfected cell is replacing the old unhealthy cell or the master cell from the blueprint is taking form where no cell currently exists. Medically document regrowth of a failed adrenal and new growth of a surgically removed colon.

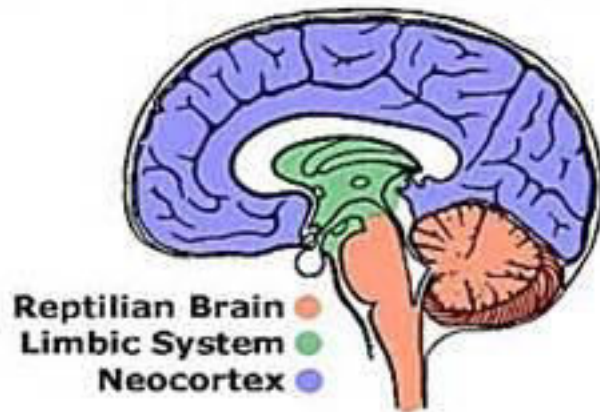
Reptilian brain/ brain stem The **brainstem** (or **brain stem**) is the posterior part of the [brain](#), adjoining and structurally continuous with the [spinal cord](#). In the [human brain](#) the brainstem includes the [midbrain](#), the [pons](#), and the [medulla oblongata](#). Sometimes the [diencephalon](#), the caudal part of the [forebrain](#), is included.^[1]

The brainstem provides the main motor and sensory innervation to the [face](#) and [neck](#) via the [cranial nerves](#). Of the twelve pairs of cranial nerves, ten pairs come from the brainstem. Though small, this is an extremely important part of the brain as the nerve connections of the motor and sensory systems from the main part of the brain to the rest of the body pass through the brainstem. This includes the [corticospinal tract](#) (motor), the [posterior column-medial lemniscus pathway](#) ([fine touch](#), [vibration sensation](#), and [proprioception](#)), and the [spinothalamic tract](#) ([pain](#), temperature, itch, and [crude touch](#)). The brainstem also plays an important role in the regulation of [cardiac](#) and [respiratory](#) function. It also regulates the [central nervous system](#), and is pivotal in maintaining [consciousness](#) and regulating the [sleep cycle](#). The brainstem has many basic functions including [heart rate](#), [breathing](#), sleeping, and eating.

Emotional brain ~ The **limbic system** is a set of [brain](#) structures located on both sides of the [thalamus](#), immediately beneath the [cerebrum](#).^[1] It has also been referred to as the **paleomammalian cortex**. It is not a separate system but a collection of structures from the [telencephalon](#), [diencephalon](#), and [mesencephalon](#).^[2] It includes the [olfactory bulbs](#), [hippocampus](#), [hypothalamus](#), [amygdala](#), [anterior thalamic nuclei](#), [fornix](#), [columns of fornix](#), [mammillary body](#), [septum pellucidum](#), [habenular commissure](#), [cingulate gyrus](#), [parahippocampal gyrus](#), [limbic cortex](#), and limbic [midbrain](#) areas.^[3]

The limbic system supports a variety of functions including [emotion](#), [behavior](#), [motivation](#), [long-term memory](#), and [olfaction](#).^[4] Emotional life is largely housed in the limbic system, and it has a great deal to do with the formation of memories.

The Evolution-Designed Brain



Working to regenerate
21 Master cells today

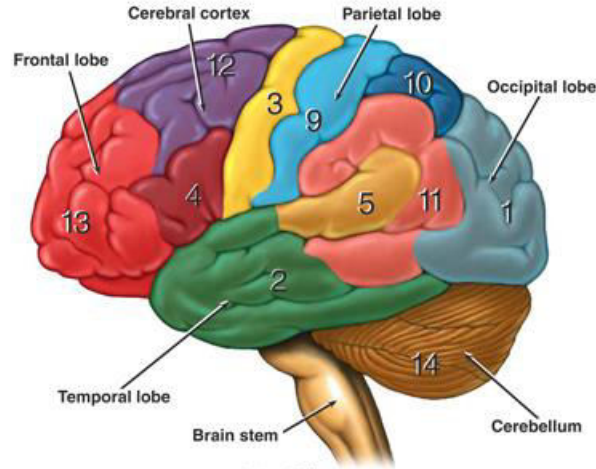
Anatomy and Functional Areas of the Brain

Functional Areas of the Cerebral Cortex

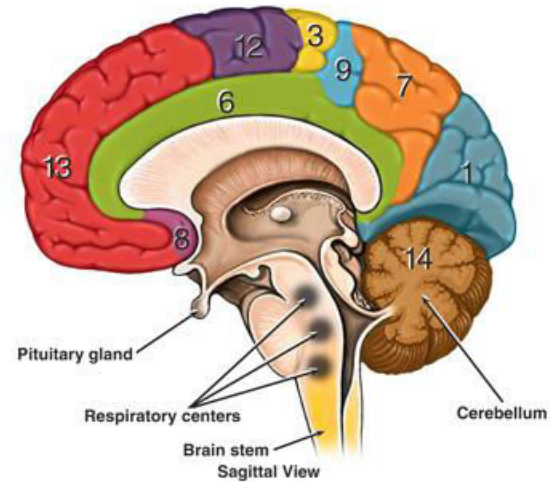
- 1 **Visual Area:**
Sight
Image recognition
Image perception
- 2 **Association Area**
Short-term memory
Equilibrium
Emotion
- 3 **Motor Function Area**
Initiation of voluntary muscles
- 4 **Broca's Area**
Muscles of speech
- 5 **Auditory Area**
Hearing
- 6 **Emotional Area**
Pain
Hunger
"Fight or flight" response
- 7 **Sensory Association Area**
- 8 **Olfactory Area**
Smelling
- 9 **Sensory Area**
Sensation from muscles and skin
- 10 **Somatosensory Association Area**
Evaluation of weight, texture, temperature, etc. for object recognition
- 11 **Wernicke's Area**
Written and spoken language comprehension
- 12 **Motor Function Area**
Eye movement and orientation
- 13 **Higher Mental Functions**
Concentration
Planning
Judgment
Emotional expression
Creativity
Inhibition

Functional Areas of the Cerebellum

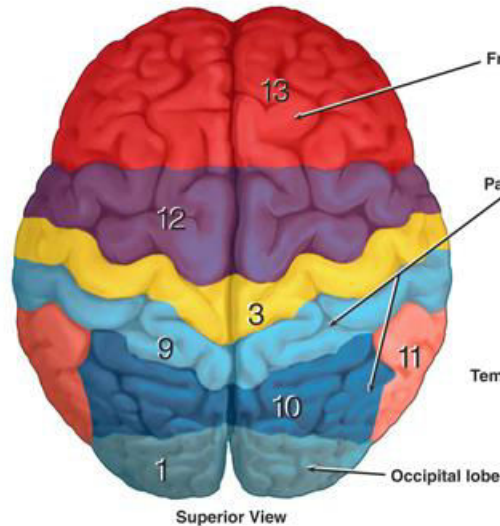
- 14 **Motor Functions**
Coordination of movement
Balance and equilibrium
Posture



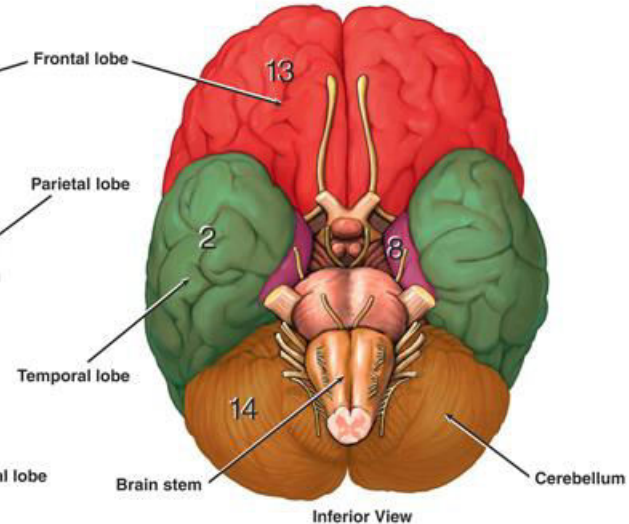
Lateral View



Sagittal View



Superior View



Inferior View

**Network of
microtubules**

Microfilaments

Chromosomes (DNA)

Cilia oars

Microvilli

Nucleus

Nuceloli

**Residual
body**

**Digestive
vacuole**

**Pinocytosis
vesicles**

**Transfer
pores**

Ribosomes

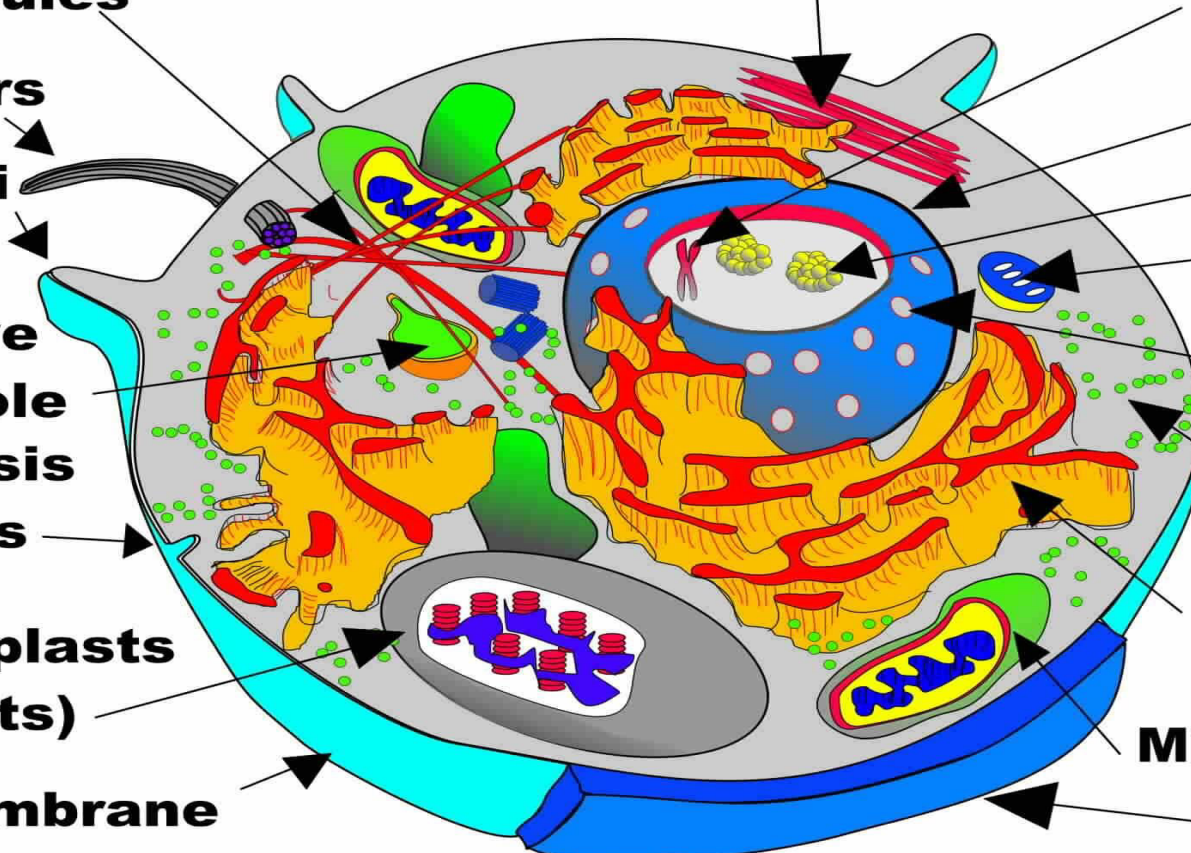
**Chloroplasts
(plants)**

**Endoplasmic
reticulum**

Mitochondria

Cell membrane

Cell wall



Pump to reinitiate 100% functions from the blueprint to the physical cell all parts

Membrane

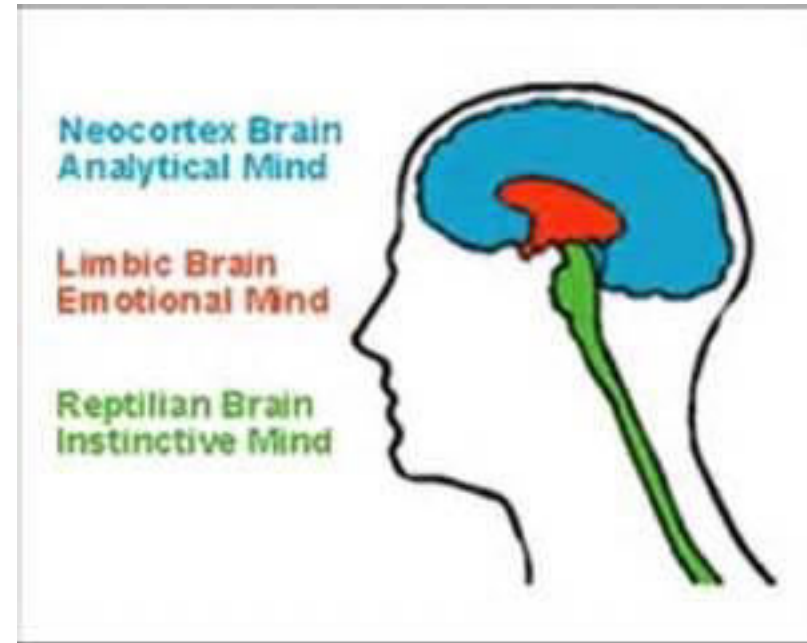
Nucleus

Absorption organelle

Elimination organelle

DNA

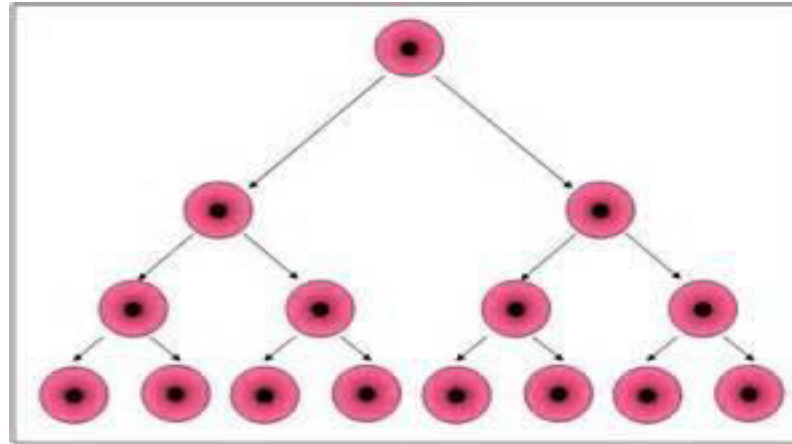
Mitochondria

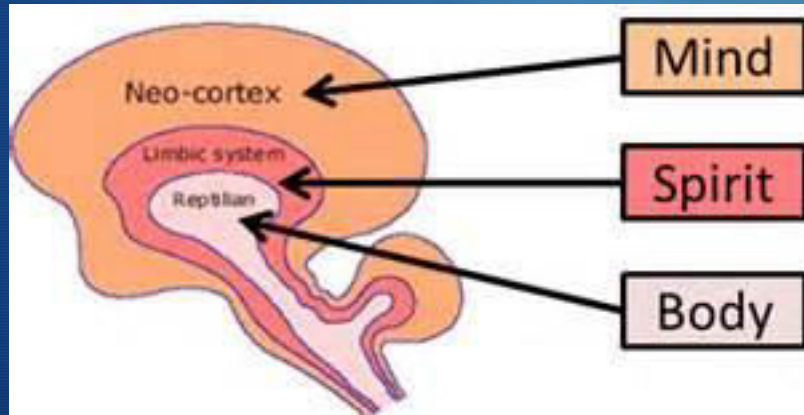
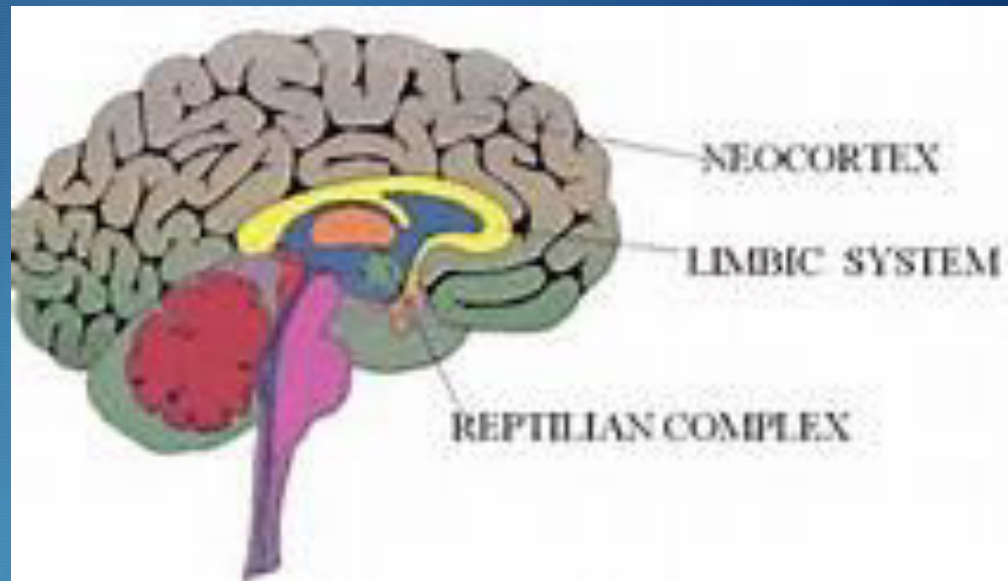


Mirroring to surrounding cells



Cascade of new cell growth





Next Steps

Are you a Part of
Our Inner Circle Community?

Please join us!

Quantum Activations Apprentice

Year of Miracles

Growing together

One to One miraculous Program VIP

